



JERUSALEM COLLEGE OF ENGINEERING, CHENNAI

(An Autonomous Institution)

(Approved by AICTE, Affiliated to Anna University,

Accredited by NBA and NAAC with 'A' Grade)

MAINTENANCE POLICY

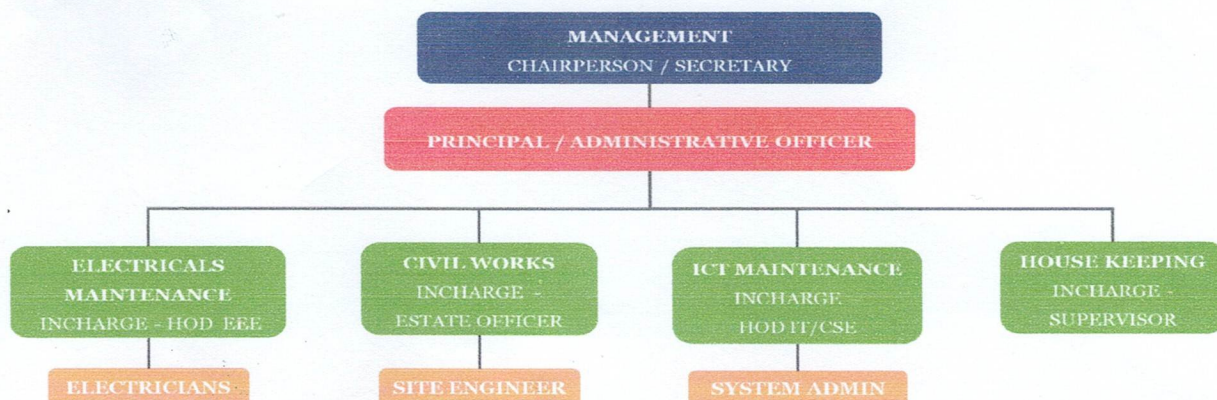
Policy Statement: The Maintenance policy of the institute aims to ensure effective maintenance, handling, and management of various amenities and resources, including buildings, computers, classrooms, equipment and laboratories etc.

Objectives :

- Maintenance of infrastructure which includes civil work modifications, civil repairs in buildings, other repairs and maintenance of internal roads, plumbing, pest control, colouring and painting for structures.
- Maintenance of furniture which includes customized fabrication of cabinets, desks, counter tops, installation of doors and windows
- Maintenance and repair of equipments in the laboratories
- Monitoring of electrical systems such as solar PV system, generator, UPS, batteries and air conditioning systems.
- Maintenance of Computer and ICT Facilities
- Monitoring housekeeping, cleaning of water tanks, and sanitary arrangements.

Decentralisation process in working for taking administrative decisions for the maintenance of Academic facility, infrastructure, electric system, ICT facilities and other facilities

CAMPUS MAINTENANCE

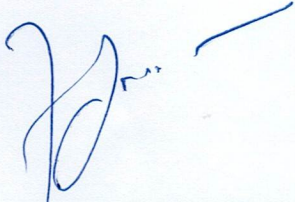


OTHER FACILITIES:


- The indoor and outdoor stadiums, gymnasium, playgrounds, and all other sporting equipment are regularly supervised and maintained by the Physical Director with the help of supporting staff.
- The RO plant, which provides 24 X 7 drinking water facility, is maintained with periodic testing of the quality of water in the Environmental Engineering laboratory.
- One faculty member is appointed as transport in-charge to supervise and maintain all transport facilities of the institution with the help of supporting staff.
- The Green Cover of the campus is well maintained by full time gardeners as well as contractual labour.
- The campus security is monitored through surveillance Cameras and is maintained by a supplier under AMC.
- Annual inspection is done for Fire Safety by Fire Service Department and issues fire safety certificate.
- The college has Canteen facility where subsidized food is provided to staff and students. The maintenance of the canteen is the responsibility of canteen manager under the supervision of food committee.

The college maintenance committee review the maintenance related issues periodically and provide necessary suggestions for the effective and timely completion of the work.

The Institute shall continuously review and update the approved policy and is committed to its implementation.



Dr. N. JOHN JEBARATHINAM
Professor, Dean IQAC & AAA
Jerusalem College of Engineering
Velachery Main Road, Narayanapuram,
Pallikaranai, Chennai-600 100.



Dr. RAMESH S
Principal
Jerusalem College of Engineering (Autonomous)
Velachery Main Road, Narayanapuram,
Pallikaranai, Chennai-600 100.